

TAIWAN

Hsinchu(Headquarter)

SYNTEC Technology Co., Ltd
ADD : No.25, Yanfa 2nd Rd., East Dist.,
Hsinchu City 300, Taiwan (R.O.C.)
TEL : +886-3-6663553
FAX : +886-3-6663505
E-mail: sales@syntecclub.com.tw

Taichung(distributor)

SUN-CNC Co., Ltd
TEL : +886-4-25337731
TAX : +886-4-25349224

SYNTEC TECHNOLOGY CO., LTD. (Taichung Office)

ADD:No. 2, Jingke 3rd Rd., Nantun Dist., Taichung
City 408, Taiwan (R.O.C.)
TEL : +886-4-23550621
E-mail: yeon@syntecclub.com.tw

Tainan(distributor)

HUNG LUN Technology Co., Ltd
ADD: No. 218, Denan Rd., Rende Dist., Tainan City
717, Taiwan (R.O.C.)
TEL : +886-6-2796707
TAX : +886-6-2796705

CHINA

Jiangsu

Suzhou SYNTEC TECHNOLOGY (Suzhou)
Co., Ltd.
ADD : Building C, No.9 Chunhui
Road,Suzou Industrial Park,China
TEL : 0512-69008860
FAX : 0512-65246029

Suzhou Huaxin of CNC Equipment Co.,
Ltd.(SZHX)
ADD : Building C, No.9 Chunhui Road,Suzou
Industrial Park,China
TEL : 0512-69008828
FAX : 0512-69560818

Jiangsu-Nanjing SYNTEC TECHNOLOGY
(Suzhou) Co., Ltd. Nanjing Branch
ADD : Room 104, Unit 2, Building 6,
Jiulonghu Villa, No. 188, Qingshuiting West
Road, Jiangning District, Nanjing City
TEL : 025-52717702
FAX : 025-52717710

SYNTEC TECHNOLOGY (Suzhou) Co., Ltd.
Nantong Branch
Room 1301, Building 1, Shangye Center,
Jincheng, No. 108, Dajie, Nantong City
TEL : 029-88287423
FAX : 029-88287423

SYNTEC TECHNOLOGY (Suzhou) Co., Ltd.
Hangzhou Branch
ADD : Room1202 Unit2 Buiding1, Edifice DiKai
, Jincheng Road, Beigan Street,Xiaoshan
District , Hangzhou City,Zhejiang Province,
China
TEL : 0571-82751187
FAX : 0571-82751186

Anhui Hefei

SYNTEC TECHNOLOGY (Suzhou) Co., Ltd. Hefei
Branch
ADD : Hefei Binhu Baohe District Century City
Fu Hui Yuan T4-2202
TEL : 0551-63814183
FAX : 0551-63814183

AROUND THE WORLD

Malaysia

MYSYNTEC TECHNOLOGY SDN BHD
ADD : 43, Ground Floor, Jalan Tpp1/1, Taman
Perindustrian Puchong, 47100, Selangor Darul Ehsan.
TEL : +603-8066 2183/+601-7674-3282
E-mail : otis.siah@syntecclub.com.tw

Thailand

SYNTEC Thailand Office
ADD : 78/38 Kheha Romkiao Rd.,
Khlong Song Ton Nun, Lat Krabang,Bangkok, 10520
TEL : +662-006-5738
E-mail : thanawat@syntecclub.com.tw

VietNam

VNSYNTEC TECHNOLOGY CO., LTD
ADD : 3F, No. 36, A4 Street, Ward 12, Tan Binh District,
Ho Chi Minh City, VietNam
TEL : +84 938332829
FAX : +84 282 253 5556
E-mail : andyngo@syntecclub.com.tw

India (Distributor)

LUNA BEARINGS
ADD : W-200 ,TTC Industrial Estate , Khairne,
Thane Belapur Road , Navi Mumbai -400708
TEL : +91-22- 61786110
E-mail : sales@lunabearings.com

Turkey

SYNTEC Turkey Office
ADD : Kücükbakkalkoy Mah. Vedat Günyol Cd.
Defne Sok. No:1 D:1502 Flora Residence,
34750 Atasehir/Istanbul, Türkiye
TEL : +90-216-2662475
E-mail : info@syntec-turkey.com

USA(South California)

SYNTEC USA Office
ADD : 766 Pinefalls Ave.Walnut,CA 91789
TEL : +1 909-551-0187
E-mail : info@syntecamerica.com

Indonesia(Distributor)

PT. OTOMASI BERSAMA INDONESIA
ADD : Ruko Arcadia Mataram Blok B, No 15, Kelurahan
Cibatu, Kecamatan Cikarang selatan, 17530, Indonesia
TEL : +6221 2210 4832/ +6281285886246
E-mail : yulius@otomasi.co

Shaanxi

Xi'an SYNTEC of CNC Equipment Co.,
Ltd. (XAST)
ADD : Room 11328, Unit 1, Building
4, Duhui, I, Yicuiyuan, No. 10, Tangyan
South Road, Gaoxin District, Xian City
TEL : 029-88287423
FAX : 029-88287423

Dongguan SYNTEC TECHNOLOGY
(Suzhou) Co., Ltd. Dongguan Branch
ADD : Zone B, 3F, Building1
No.522,Chain-An East Rd., Changan
Townmap
TEL : 0769-81660318
FAX : 0769-81660328

Guangdong Guangzhou SYNTEC
TECHNOLOGY (Suzhou) Co., Ltd.
Guangzhou Branch
ADD : 2Ti404, Zhiqi, No. 8, Luojia
Village Section, Fuyi Road, Dalong
Street, Panyu District, Guangzhou City
TEL : 020-34583040
FAX : 020-34583220

Changping SYNTEC TECHNOLOGY
(Suzhou) Co., Ltd. Changping Branch
ADD : Floor 5, Huilong Building, No. 8,
Qianyi Road, Banshi Village, Changping
Town, Dongwan City
TEL : 0769-82826802
FAX : 0769-82826820

Shenzhen SYNTEC of CNC Equipment
Co., Ltd. (SCST)
ADD : 5F, Building C, Sunshine
Technology Park, Gin-Long 2nd Rd.,
Baolong Industrial Zone, Shenzhen
Longgang District
TEL : 0755-84320380
FAX : 0755-84559490

SYNTEC TECHNOLOGY (Suzhou) Co., Ltd.
Jiangmen Branch
ADD : Room 02, Floor 7, Huoju Building,
Gaoxin District, No. 288, Jinou Road,
Jianghai District, Jiangmen City,
Guangdong Province
TEL : 0750-3762143
FAX : 0750-3771824

Fujian

SYNTEC TECHNOLOGY (Suzhou) Co., Ltd.
Xiamen Branch
ADD : No. 100,B Chuang Chang Fang 3F
East,Jin Fu Road,Tong An District,Xiamen
City, Fujian Province, China
TEL : +86-592-7191901
FAX : +86-592-7220536

Zhejiang Hangzhou

SYNTEC TECHNOLOGY (Suzhou) Co., Ltd.
Hangzhou Branch
ADD : Room1202 Unit2 Buiding1, Edifice
DiKai, Jincheng Road, Beigan Street,X-
iaoshan District , Hangzhou City,Zhejiang
Province, China
TEL : 0571-82751187
FAX : 0571-82751186

SYNTEC TECHNOLOGY (Suzhou) Co., Ltd.
Ningbo Branch
ADD : 1207, No. 262, 416 Alley, Chaohui
Road, Jiangdong District, Ningbo City
TEL : 0574-87750305
FAX : 0574-87750306

SYNTEC TECHNOLOGY (Suzhou) Co., Ltd.
Wenling Branch
ADD : Room 1206, Department A,
Zhenxing Plaza, Taiping Subdistrict,
Wenling City
TEL : 0576- 86138372
FAX : 0576-86119106

Luoyang

Luoyang SYNTEC of CNC Equipment Co.,
Ltd. (LYST)
ADD : 706, Runsheng Building, Junction
Of Heluo Road And Sanshan Road,
Gaoxinjishu Development Area, Luoyang
City
TEL : 0379-65110352
FAX : 0379-65110352

Chongqing

SYNTEC TECHNOLOGY (Suzhou) Co., Ltd.
Chongqing Branch
ADD : 11-6, Building 2, No. 62, Taishan
Boulevard East Section, Bu New District,
Chongqing City
TEL : 023-67913296
FAX : 023-67634382

Tianjin

SYNTEC TECHNOLOGY (Suzhou) Co.,
Ltd. Tianjin Branch
ADD : No. 37, A District, Huayuan,
Qiaoruifeng, No. 7, Waihuan West
Road, Xiqing District, Tianjin City
TEL : 022-23739192

Shandong Jinan

SYNTEC TECHNOLOGY (Suzhou) Co.,
Ltd. Jinan Branch
ADD : Room 101, Unit 3, Building 9,
Kangqiao, Luneng, No. 28,
Sankongqiao Street, Tianqiao District,
Jinan
TEL : 0531-85907208
FAX : 0531-85905708

Hubei

Wuhan SYNTEC of CNC Equipment Co.,
Ltd. (WHST)
ADD : Room 2003-2006, A Guanggo-
gooji, No.456,Luoyu East Road,
Hongshan District , Wuhan, China
TEL : 027-87638876
FAX : 027-87204137

Liaoning

Shenyang SYNTEC of CNC Equipment Co.,
Ltd. (SYST)
ADD : C61-2-1, Diyicheng, No. 1, 1Jia1,
Qigong Street, Tiexi District, Shenyang City,
Liaoning Province
TEL : 18698806526

LEANTEC Intelligence CO., LTD.

No.25, Yanfa 2nd Rd., East Dist.,
Hsinchu City 300, Taiwan

☎ 886-3-6663553

☎ 886-3-6663505

✉ sales@syntecclub.com.tw

2F., No.2, Jingke 3rd Rd.,
Nantun Dist.,Taichung City 408

☎ 886-4-23550621

☎ 886-4-23550621

✉ jason.chen@leantec.com.tw

Suzhou LEANTEC Intelligence Co., Ltd.

Building B, No.9 Chunhui Road,Suzou
Industrial Park,China

☎ 86-512-69008860

☎ 86-512-65246029

✉ service@syntecclub.com.cn



<https://www.leantec.com.tw/default.aspx>



LEANTEC ROBOT CATALOG

LEANTEC ROBOT
AN EXPERT IN
CNC APPLICATIONS

LEANTEC ROBOT CATALOG

LEANTEC ROBOT
AN EXPERT IN
CNC APPLICATIONS

LEANTEC

CONTENT

Company profile / 01-02

Robot introduction / 03-28

Robot applications / 29-34

Robot controller / 35-36

Modular platform / 37-38

ABOUT LEANTEC

25+

25-Year Experience

1

All in 1 Service

50+

50+ Service Locations

NO.1

PC-based No.1

SYNTEC specializes in PC-based motion control through excellent research and development for 25 years.

Totally integrated automation

Supply automation, IOT, software and hardware solutions.

With 50+ service locations around the world

Made in Taiwan

Consistent production process



Under the industry 4.0 global trend, the industrial sector no longer relies on traditional production methods. What replaced them are diverse, customization centered, and small quantity productions. LEANTEC is able to respond to global industrial changes in providing comprehensive solutions to clients, thereby realizing our vision of achieving smart manufacturing and creating smart factories.

In moving towards industry 4.0, LEANTEC uses its smart manufacture system integration as its core advantage in accumulating experience through small quantity & diverse productions, cyber physical system integration, on-site services, and complemented by multiple sales channels, in providing one-stop comprehensive solutions.

Company vision:

Trustworthy intelligent manufacturer partner

Company mission:

Comprehensive smart factory solution



ROBOT INTRODUCTION

LEANTEC ROBOT
AN EXPERT IN
CNC APPLICATIONS



LEANTEC
LEANTEC INTELLIGENCE

LEANTEC

LEANTEC INTELLIGENCE



R Series



R Series :

High-precision, high-speed, compact and small footprint design. With high IP rating, the robot is protected against cutting fluid and can be installed inside a machine. It is recommended for high precision cutter grinder load and unload applications

Type R	Payload(kg)	Reach(mm)	Pos.rep(mm)	Mounting	Protection	Axes	Remarks
LRA596-4-6A-R	4KG	596	±0.02	Floor, Upside-down, Angle	IP54/IP67	6	Standard
LRA596-4-6H-R	4KG	596	±0.02	Floor, Upside-down, Angle	IP54/IP67	6	Hollow
LRA707-7-6A-R	7KG	707	±0.02	Floor, Upside-down, Angle	IP54/IP67	6	Standard
LRA707-7-6H-R	7KG	707	±0.02	Floor, Upside-down, Angle	IP54/IP67	6	Hollow
LRA906-7-6A-R	7KG	906	±0.03	Floor, Upside-down, Angle	IP54/IP67	6	Standard
LRA906-7-6H-R	7KG	906	±0.03	Floor, Upside-down, Angle	IP54/IP67	6	Hollow

C Series

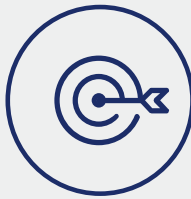


C series :

High payload capacity and long reach. It is well suited for loading and unloading lathe/milling machines. With the additional application packages, it can meet the requirements of stamping, palletizing, polishing, welding, and cutting industries.

Type C	Payload(kg)	Reach(mm)	Pos.rep(mm)	Mounting	Protection	Axes	Remarks
LRA705-5-6A-C	5KG	706	±0.05	Floor, Upside-down, Angle	IP54	6	Standard
LRA900-5-6A-C	5KG	596	±0.05	Floor, Upside-down, Angle	IP54	6	Standard
LRA1468-10-6A-C	10KG	1468	±0.08	Floor, Upside-down, Angle	IP54	6	Standard
LRA1598-10-6A-C	10KG	1598	±0.08	Floor, Upside-down, Angle	IP54	6	Standard
LRA1717-20-6A-C	20KG	1717	±0.08	Floor, Upside-down, Angle	IP54	6	Standard
LRA1759-5-6A-C	5KG	1759	±0.08	Floor, Upside-down, Angle	IP54	6	Standard
LRA2000-8-6A-C	8KG	2000	±0.08	Floor, Upside-down, Angle	IP54	6	Standard
LRA2100-60-6A-C	60KG	2100	±0.2	Floor	IP54	6	Standard

ADVANTAGES



High-precision, high-speed,
and high-stability
The core control system
and driver are researched and
developed in Taiwan



Easy to operate
Intuitive icon-based
programming on a teach pendant



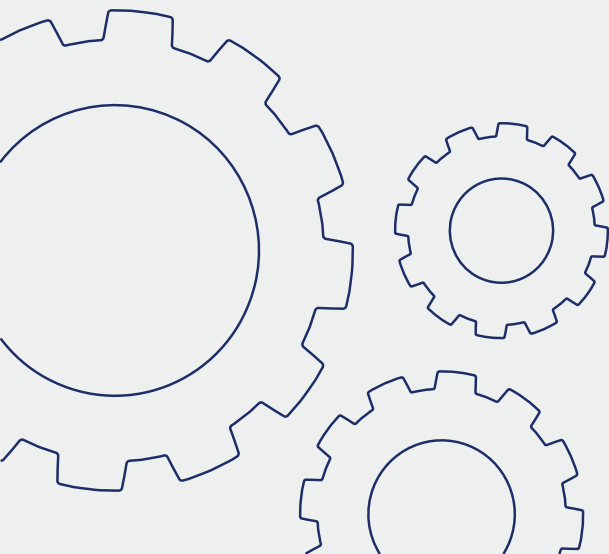
Supports multiple industrial
communication protocols
Modbus TCP, RS485,
Ethernet, and NetPLC



Allow in-house customizations
Easy-to-use tool kits for developing
industry-specific packages



Adapt quickly with low learning curve
Provide various applications
for different needs



R Series 4KG

LRA596-4-6A-R

LRA596-4-6H-R Hollow wrist model



LRA596-4-6A-R

PRODUCT FEATURES

- High speed and high precision with $\pm 0.02\text{mm}$ position repeatability
- Equipped with 16 I/O and is easily expandable for more complex applications
- Standard IP54 protection with optional upgrade to IP67 for applications in harsh environment
- Equipped with 4 quick pneumatic connections and 8 I/O bus connection
- Hollow wrist model allows air hoses and I/O sensor cables be installed from the base to the flange for easier cable management
- Provide 3 mounting methods : Floor, Upside-down, and Angle mount
- Compact and small footprint design. It's suitable for light payload operations and narrow workspace

MAIN APPLICATIONS

Handling

Loading/Unloading

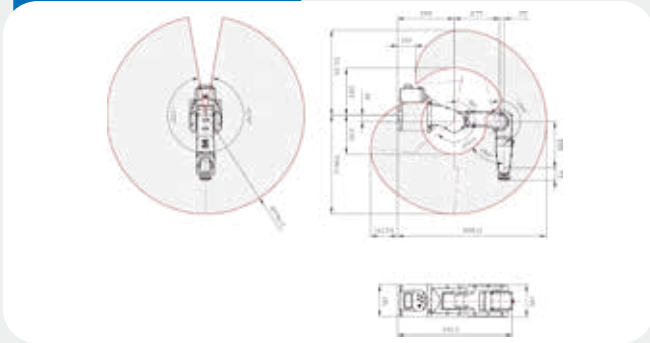
Assembling

Palletizing

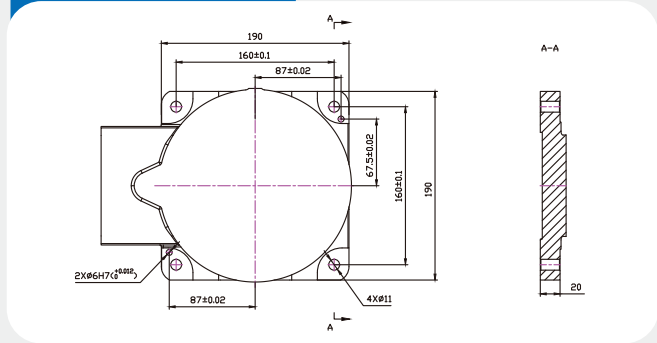
Grinding

Others

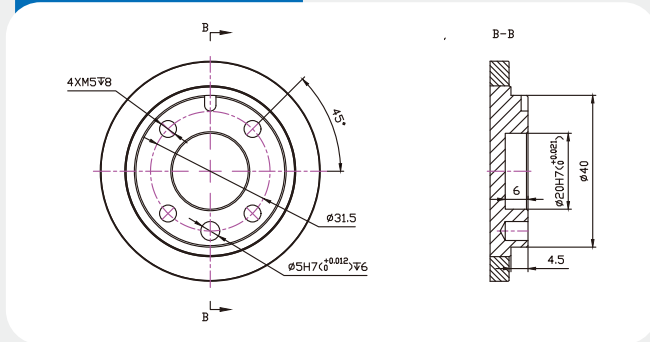
Robot Work Envelope



Robot Base Dimension

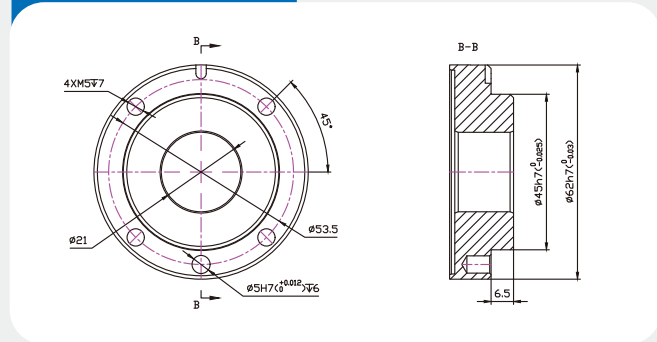


Robot Flange Dimension



LRA596-4-6A-R

Robot Flange Dimension



LRA596-4-6H-R hollow model

PRODUCT PARAMETERS

No. Control Axes		6
Payload(kg)		4
Max.Reach(mm)		596
Pos.rep(mm)		±0.02
Motion Range(°)	J1 axes	±170
	J2 axes	144/-80
	J3 axes	54/-194
	J4 axes	±170
	J5 axes	±119
	J6 axes	±360
Max.Speed(°/s)	J1 axes	440
	J2 axes	355
	J3 axes	440
	J4 axes	490
	J5 axes	450
	J6 axes	720(6A)/948(6H)

Motor Output(kw)	J1 axes	0.4
	J2 axes	0.4
	J3 axes	0.2
	J4 axes	0.1
	J5 axes	0.05
	J6 axes	0.1
Weight(kg)		~32
Installation		Floor, Upside-down, Angle
Levels of protection		IP54/IP67
Ambient temperature / Humidity / Vibration		Ambient temperature: 0~45 Ambient humidity: Normally 20~80 %RH or less (No dew. nor frost allow) Short term 90 %RH or less (within one month) Vibration acceleration: 4.9 m/s ² (0.5G) or less

R Series 7KG

LRA707-7-6A-R

LRA707-7-6H-R Hollow wrist model



PRODUCT FEATURES

- High speed and high precision with $\pm 0.02\text{mm}$ position repeatability
- Equipped with 16 I/O and is easily expandable for more complex applications
- Standard IP54 protection with optional upgrade to IP67 for applications in harsh environment
- Equipped with 4 quick pneumatic connections and 8 I/O bus connection
- Hollow wrist model allows air hoses and I/O sensor cables be installed from the base to the flange for easier cable management
- Provide 3 mounting methods : Floor, Upside-down, and Angle mount
- Compact and small footprint design. It's suitable for light payload operations and narrow workspace



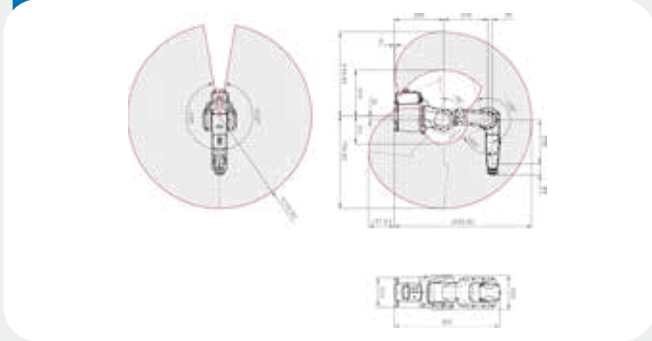
MAIN APPLICATIONS

Handling

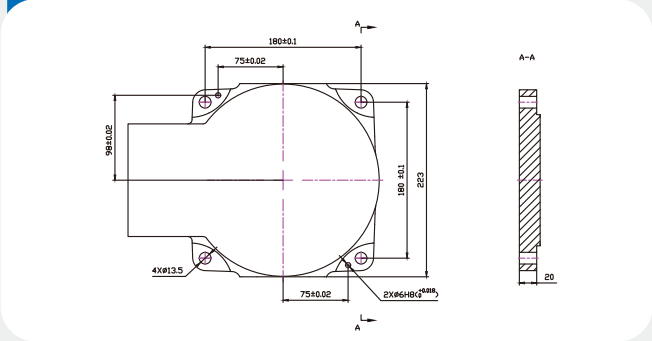
Loading/Unloading

Grinding

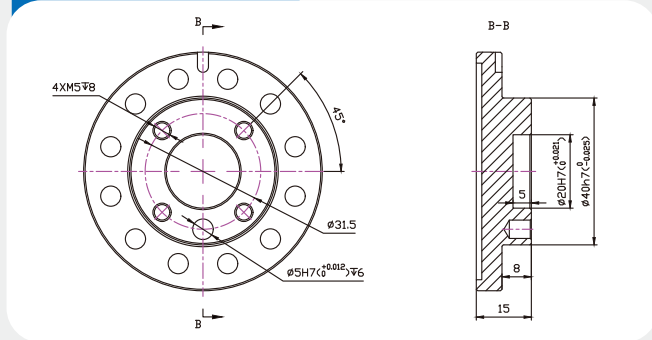
Robot Work Envelope



Robot Base Dimension

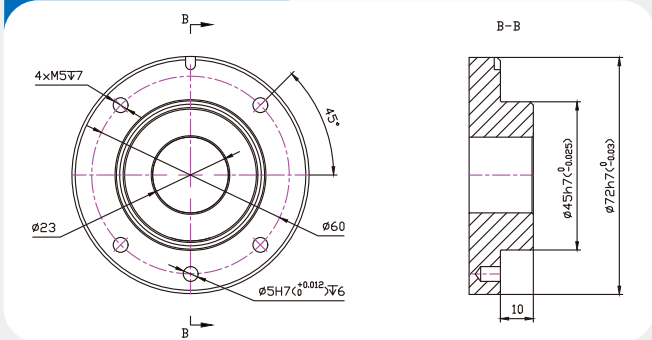


Robot Flange Dimension



LRA707-7-6A-R

Robot Flange Dimension



LRA707-7-6H-R hollow model

PRODUCT PARAMETERS

No. Control Axes		6
Payload(kg)		7
(mm) Max.Reach(mm)		707
Pos.rep(mm)		±0.02
Motion Range(°)	J1 axes	±170
	J2 axes	135/-96
	J3 axes	65/-195
	J4 axes	±170
	J5 axes	±120
	J6 axes	±360
Max.Speed(°/s)	J1 axes	440
	J2 axes	355
	J3 axes	440
	J4 axes	480
	J5 axes	450
	J6 axes	705(6A)/900(6H)

Motor Output(kw)	J1 axes	0.75
	J2 axes	0.75
	J3 axes	0.4
	J4 axes	0.2
	J5 axes	0.1
	J6 axes	0.1
Weight(kg)	~52	
Installation	Floor, Upside-down, Angle	
Levels of protection	IP54/IP67	
Ambient temperature / Humidity / Vibration	Ambient temperature: 0~45 Ambient humidity: Normally 20~80 %RH or less (No dew. nor frost allow) Short term 90 %RH or less (within one month) Vibration acceleration: 4.9 m/s ² (0.5G) or less	

R Series 7KG (Long arm type)

LRA906-7-6A-R

LRA906-7-6H-R Hollow wrist model



PRODUCT FEATURES

- Wider range of motion. The workspace is increased by 200mm from the standard model
- High speed and high precision with $\pm 0.03\text{mm}$ position repeatability
- Equipped with 16 I/O and is easily expandable for more complex applications
- Standard IP54 protection with optional upgrade to IP67 for applications in harsh environment
- Equipped with 4 quick pneumatic connections and 8 I/O bus connection
- Hollow wrist model allows air hoses and I/O sensor cables be installed from the base to the flange for easier cable management
- Provide 3 mounting methods : Floor, Upside-down, and Angle mount
- Compact and small footprint design. It's suitable for light payload operations and narrow workspace

MAIN APPLICATIONS

Handling

Loading/Unloading

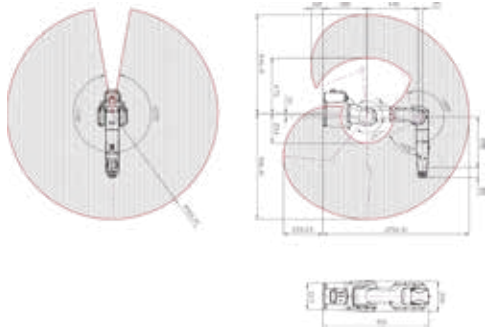
Assembling

Palletizing

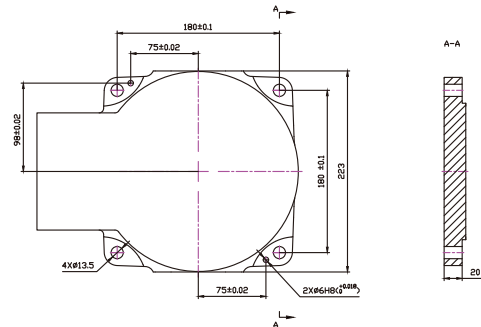
Grinding

Others

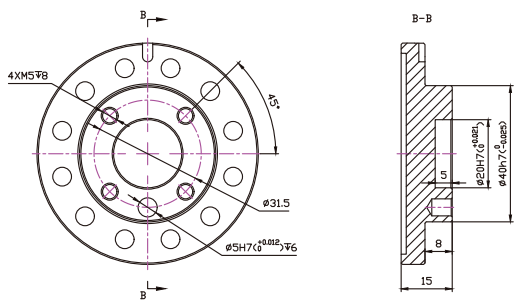
Robot Work Envelope



Robot Base Dimension

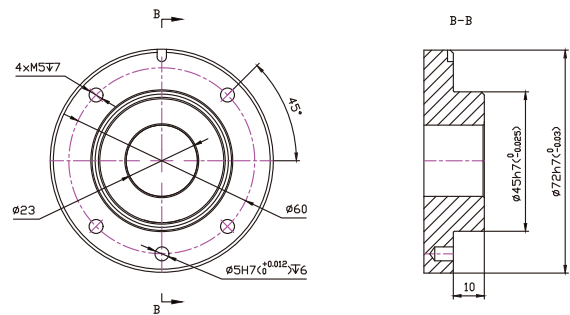


Robot Flange Dimension



LRA906-7-6A-R

Robot Flange Dimension



LRA906-7-6H-R hollow model

PRODUCT PARAMETERS

No. Control Axes		6
Payload(kg)		7
Max.Reach(mm)		906
Pos.rep(mm)		±0.03
Motion Range(°)	J1 axes	±170
	J2 axes	130/-96
	J3 axes	65/-195
	J4 axes	±170
	J5 axes	±120
	J6 axes	±360
Max.Speed(°/s)	J1 axes	355
	J2 axes	355
	J3 axes	355
	J4 axes	480
	J5 axes	450
	J6 axes	705(6A)/900(6H)

Motor Output(kw)	J1 axes	0.75
	J2 axes	0.75
	J3 axes	0.4
	J4 axes	0.2
	J5 axes	0.1
	J6 axes	0.1
(kg)Weight(kg)		~52
Installation		Floor, Upside-down, Angle
Levels of protection		IP54/IP67
Ambient temperture / Humidity / Vibration		Ambient temperature: 0~45 Ambient humidity: Normally 20~80 %RH or less (No dew. nor frost allow) Short term 90 %RH or less (within one month) Vibration acceleration: 4.9 m/s ² (0.5G) or less

C Series 5KG

LRA705-5-6A-C



PRODUCT FEATURES

- Compact and small footprint design for light payload operations
- Equipped with 16 I/O and is easily expandable for more complex applications
- Equipped 6 I/O bus connection inside for easier cable management
- Provide 3 mounting methods : Floor, Upside-down, and Angle mount

MAIN APPLICATIONS

Handling

Loading/Unloading

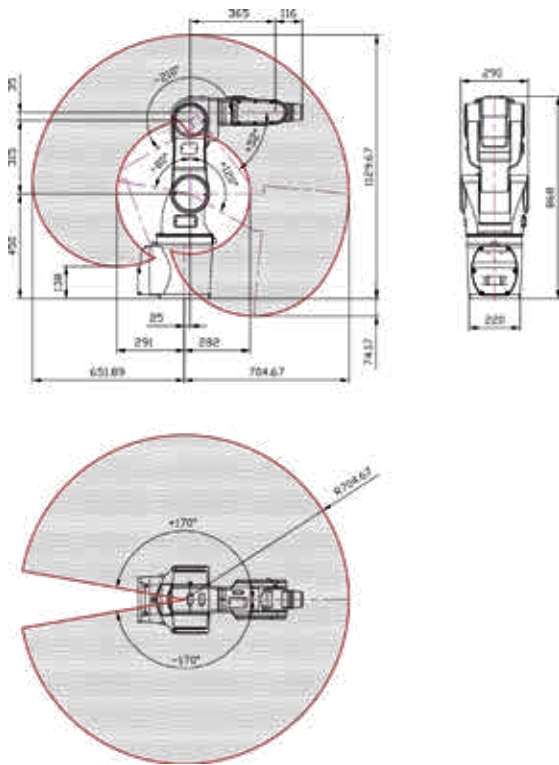
Grinding

Others

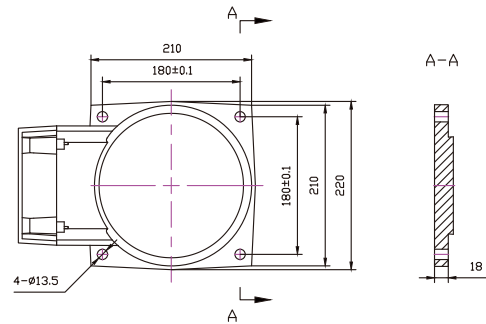


LRA705-5-6A-C

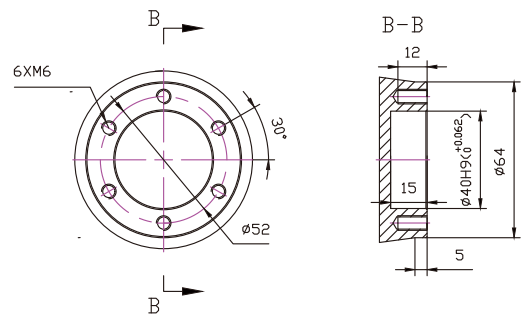
Robot Work Envelope



Robot Base Dimension



Robot Flange Dimension



PRODUCT PARAMETERS

No. Control Axes		6
Payload(kg)		5
Max.Reach(mm)		705
Pos.rep(mm)		±0.05
Motion Range(°)	J1 axes	±170
	J2 axes	120/-80
	J3 axes	52/-210
	J4 axes	±170
	J5 axes	±120
	J6 axes	±360
Max.Speed(°/s)	J1 axes	330
	J2 axes	300
	J3 axes	300
	J4 axes	370
	J5 axes	370
	J6 axes	550

Motor Output(kw)	J1 axes	0.4
	J2 axes	0.4
	J3 axes	0.4
	J4 axes	0.15
	J5 axes	0.2
	J6 axes	0.15
Weight(kg)		~48
Installation		Floor, Upside-down, Angle
Levels of protection		IP54
Ambient temperature / Humidity / Vibration		Ambient temperature: 0~40 Ambient humidity: Normally 75 %RH or less (No dew. nor frost allow) Short term 90 %RH or less (within one month) Vibration acceleration: 4.9 m/s ² (0.5G) or less

C Series 5KG (Long arm type)

LRA900-5-6A-C



PRODUCT FEATURES

- Compact and small footprint design, suitable for light and medium payload operations. Longer reach than LRA-705-5-6A-C for wide range of applications
- Equipped with 16 I/O and is easily expandable for more complex applications
- Equipped 6 I/O bus connection inside for easier cable management
- Provide 3 mounting methods : Floor, Upside-down, and Angle mount

MAIN APPLICATIONS

Handling

Loading/Unloading

Grinding



LRA900-5-6A-C

C Series 10KG

LRA1468-10-6A-C



PRODUCT FEATURES

- Suitable for light and medium payload operations in wide range of applications
- Equipped with 16 I/O and is easily expandable for more complex applications
- Equipped 6 I/O bus connection inside for easier cable management
- Provide 3 mounting methods : Floor, Upside-down, and Angle mount

MAIN APPLICATIONS

Handling

Loading/Unloading

Welding

Others



C Series 10KG (Long arm type)

LRA1598-10-6A-C



PRODUCT FEATURES

- Suitable for light load and medium load operations
wide range of arm span
- Equipped with 16 I/O and is easily expandable for more complex applications
- Equipped 6 I/O bus connection inside for easier cable management
- Provide 3 mounting methods : Floor, Upside-down, and Angle mount

MAIN APPLICATIONS

Handling

Loading/Unloading

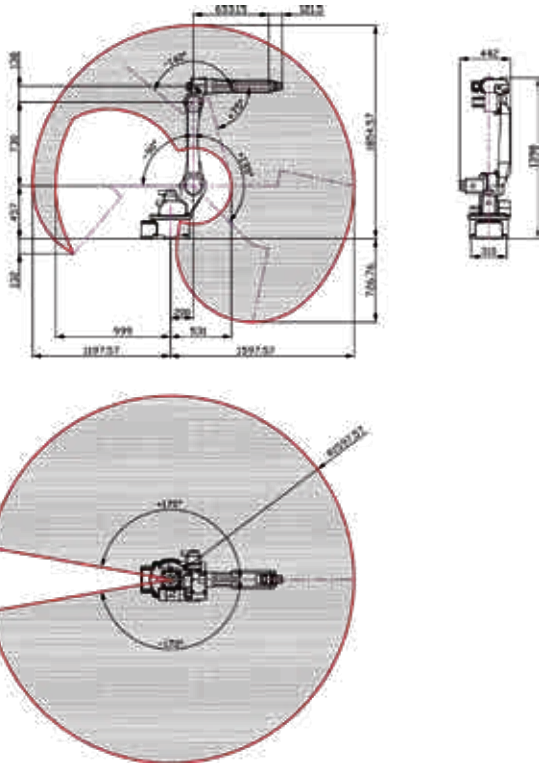
Assembling

Grinding

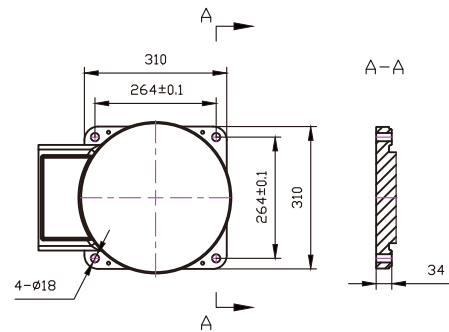
Others



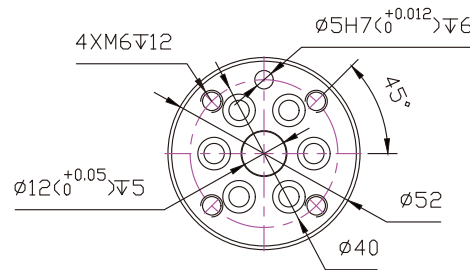
Robot Work Envelope



Robot Base Dimension



Robot Flange Dimension



PRODUCT PARAMETERS

No. Control Axes		6
Payload(kg)		10
Max.Reach(mm)		1598
Pos.rep(mm)		±0.08
Motion Range(°)	J1 axes	±170
	J2 axes	135/-90
	J3 axes	75/-140
	J4 axes	±170
	J5 axes	±130
	J6 axes	±360
Max.Speed(°/s)	J1 axes	190
	J2 axes	140
	J3 axes	140
	J4 axes	320
	J5 axes	150
	J6 axes	320

Motor Output(kw)	J1 axes	1.5
	J2 axes	1.5
	J3 axes	0.75
	J4 axes	0.2
	J5 axes	0.2
	J6 axes	0.2
Weight(kg)	~268	
Installation	Floor, Upside-down, Angle	
Levels of protection	IP54	
Ambient temperture / Humidity / Vibration	Ambient temperature: 0~40 Ambient humidity: Normally 75 %RH or less (No dew. nor frost allow) Short term 90 %RH or less (within one month) Vibration acceleration: 4.9 m/s ² (0.5G) or less	

C Series 20KG

LRA1717-20-6A-C



PRODUCT FEATURES

- Suitable for light load and medium load operations.
Wide range of arm span
- Equipped with 16 I/O and is easily expandable for more complex applications
- Equipped 6 I/O bus connection inside for easier cable management
- Provide 3 mounting methods : Floor, Upside-down, and Angle mount

MAIN APPLICATIONS

Handling

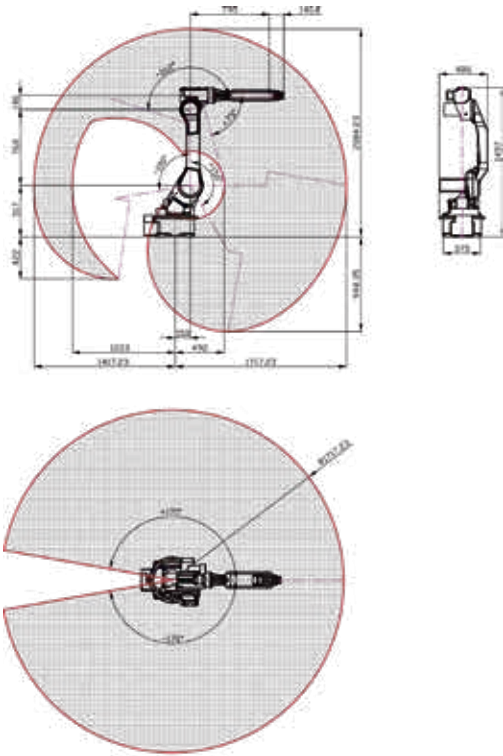
Loading/Unloading

Assembling

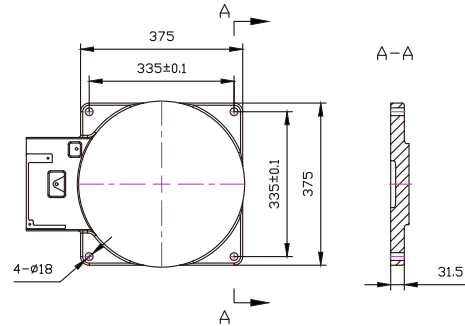
Welding

Others

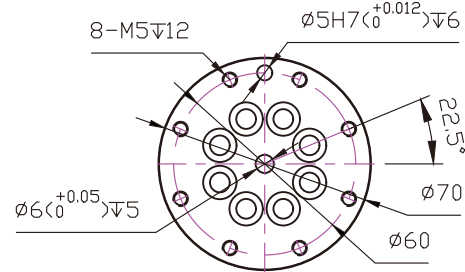
Robot Work Envelope



Robot Base Dimension



Robot Flange Dimension



PRODUCT PARAMETERS

No. Control Axes		6
Payload(kg)		20
Max.Reach(mm)		1717
Pos.rep(mm)		±0.08
Motion Range(°)	J1 axes	±170
	J2 axes	150/-100
	J3 axes	75/-162
	J4 axes	±170
	J5 axes	±130
	J6 axes	±360
Max.Speed(°/s)	J1 axes	148
	J2 axes	110
	J3 axes	140
	J4 axes	200
	J5 axes	170
	J6 axes	320

Motor Output(kw)	J1 axes	1.5
	J2 axes	2
	J3 axes	1.5
	J4 axes	0.4
	J5 axes	0.2
	J6 axes	0.2
Weight(kg)	~268	
Installation	Floor, Upside-down, Angle	
Levels of protection	IP54	
Ambient temperature / Humidity / Vibration	Ambient temperature: 0~40 Ambient humidity: Normally 75 %RH or less (No dew. nor frost allow) Short term 90 %RH or less (within one month) Vibration acceleration: 4.9 m/s ² (0.5G) or less	

C Series 5KG (Long arm type)

LRA1758-5-6A-C



PRODUCT FEATURES

- Compact and small footprint design for light payload operations
- Equipped with 16 I/O and is easily expandable for more complex applications
- Equipped 6 I/O bus connection inside for easier cable management
- Provide 3 mounting methods : Floor, Upside-down, and Angle mount

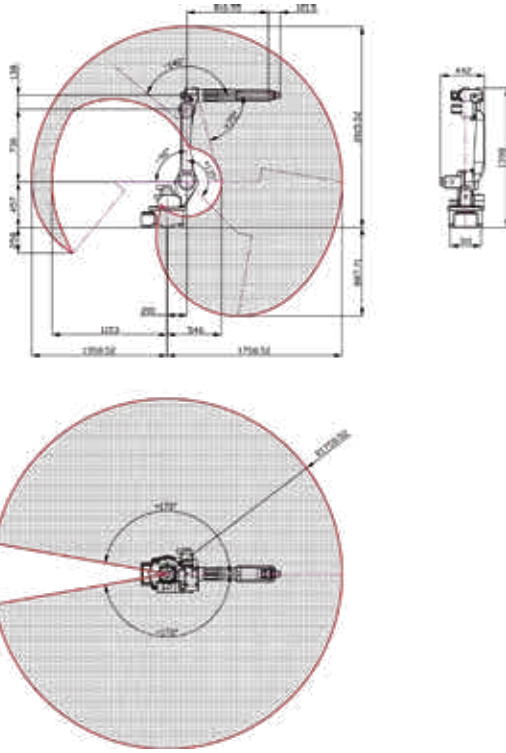
MAIN APPLICATIONS

Handling

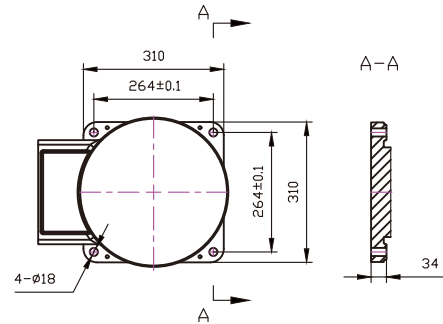
Loading/Unloading

Grinding

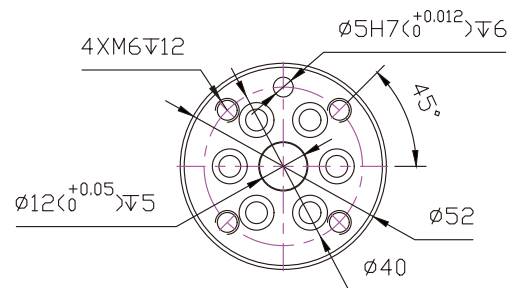
Robot Work Envelope



Robot Base Dimension



Robot Flange Dimension



PRODUCT PARAMETERS

No. Control Axes		6
Payload(kg)		5
Max.Reach(mm)		1758
Pos.rep(mm)		±0.08
Motion Range(°)	J1 axes	±170
	J2 axes	135/-90
	J3 axes	75/-140
	J4 axes	±170
	J5 axes	±130
	J6 axes	±360
Max.Speed(°/s)	J1 axes	148
	J2 axes	110
	J3 axes	120
	J4 axes	260
	J5 axes	150
	J6 axes	320

Motor Output(kw)	J1 axes	1.5
	J2 axes	1.5
	J3 axes	0.75
	J4 axes	0.2
	J5 axes	0.2
	J6 axes	0.2
Weight(kg)		~270
Installation		Floor, Upside-down, Angle
Levels of protection		IP54
Ambient temperature / Humidity / Vibration		Ambient temperature: 0~40 Ambient humidity: Normally 75 %RH or less (No dew, nor frost allow) Short term 90 %RH or less (within one month) Vibration acceleration: 4.9 m/s ² (0.5G) or less

C Series 8KG (Long arm type)

LRA2000-8-6A-C



PRODUCT FEATURES

- Suitable for welding and loading/unloading light payload with extended reach design
- Equipped with 16 I/O and is easily expandable for more complex applications
- Equipped 6 I/O bus connection inside for easier cable management
- Provide 3 mounting methods : Floor, Upside-down, and Angle mount

MAIN APPLICATIONS

Handling

Loading/Unloading

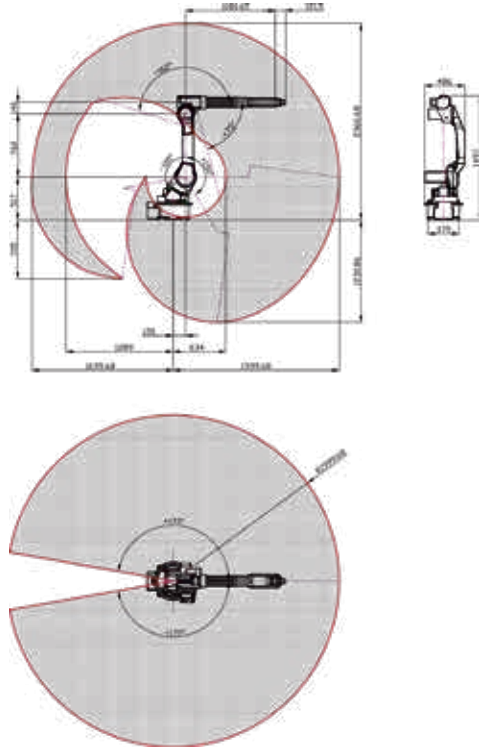
Assembling

Welding

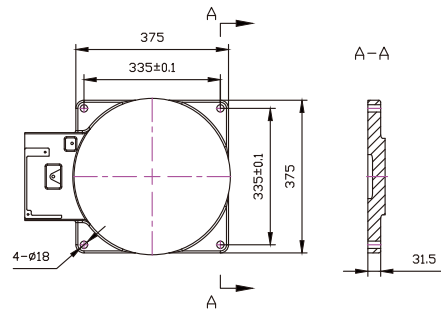
Others



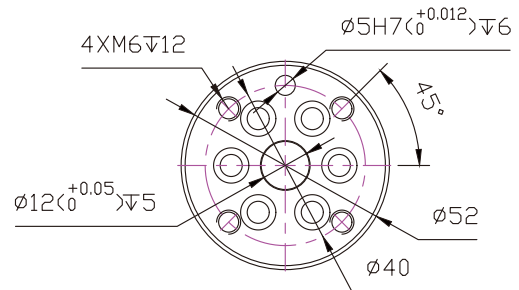
Robot Work Envelope



Robot Base Dimension



Robot Flange Dimension



PRODUCT PARAMETERS

No. Control Axes		6
Payload(kg)		8
Max.Reach(mm)		2000
Pos.rep(mm)		±0.08
Motion Range(°)	J1 axes	±170
	J2 axes	150/-100
	J3 axes	75/-162
	J4 axes	±170
	J5 axes	±130
	J6 axes	±360
Max.Speed(°/s)	J1 axes	148
	J2 axes	110
	J3 axes	140
	J4 axes	200
	J5 axes	150
	J6 axes	320

Motor Output(kw)	J1 axes	1.5
	J2 axes	2
	J3 axes	1.5
	J4 axes	0.2
	J5 axes	0.2
	J6 axes	0.2
Weight(kg)	~270	
Installation	Floor, Upside-down, Angle	
Levels of protection	IP54	
Ambient temperture / Humidity / Vibration	Ambient temperature: 0~40 Ambient humidity: Normally 75 %RH or less (No dew, nor frost allow) Short term 90 %RH or less (within one month) Vibration acceleration: 4.9 m/s ² (0.5G) or less	

C Series 60KG

LRA2100-60-6A-C



PRODUCT FEATURES

- Suitable for heavy payload, large workpiece and woodworking industry with wide range of arm span
- Equipped with 16 I/O and is easily expandable for more complex applications

MAIN APPLICATIONS

Handling

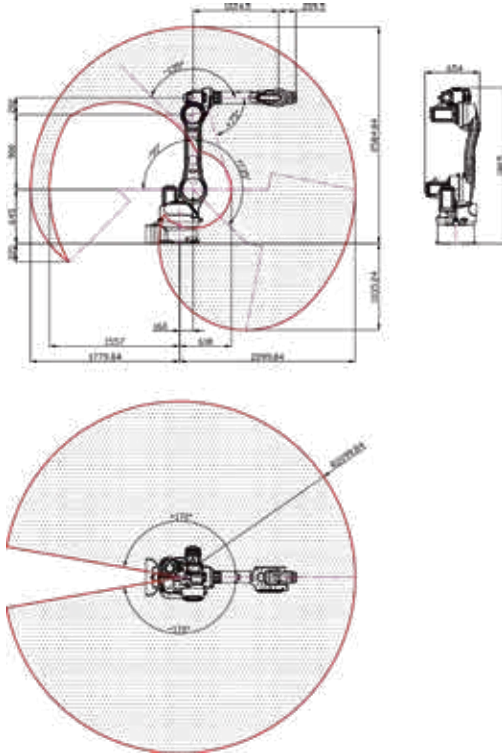
Loading/Unloading

Assembling

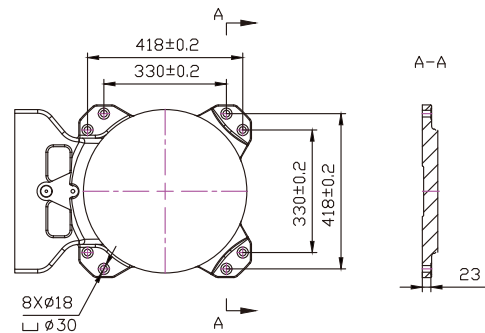
Welding

Others

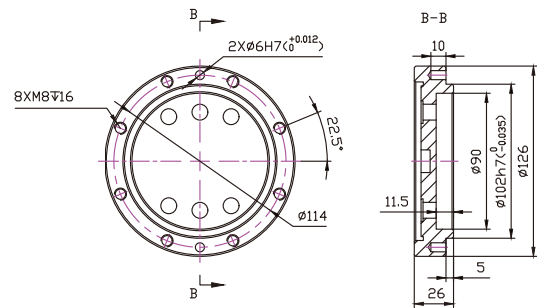
Robot Work Envelope



Robot Base Dimension



Robot Flange Dimension



PRODUCT PARAMETERS

No. Control Axes		6
Payload(kg)		60
Max.Reach(mm)		2100
Pos.rep(mm)		±0.2
Motion Range(°)	J1 axes	±170
	J2 axes	135/-90
	J3 axes	75/-135
	J4 axes	±170
	J5 axes	±120
	J6 axes	±360
Max.Speed(°/s)	J1 axes	132
	J2 axes	104
	J3 axes	104
	J4 axes	237
	J5 axes	171
	J6 axes	171

Motor Output(kw)	J1 axes	3
	J2 axes	4.5
	J3 axes	3
	J4 axes	1.5
	J5 axes	0.75
	J6 axes	0.75
Weight(kg)		~780
Installation		Floor
Levels of protection		IP54
Ambient temperature / Humidity / Vibration		Ambient temperature: 0~40 Ambient humidity: Normally 20~80 %RH or less (No dew, nor frost allow) Short term 90 %RH or less (within one month) Vibration acceleration: 4.9 m/s ² (0.5G) or less

ROBOT APPLICATIONS

Lathe & Machining

Solution

Goal : Solution to machine tending of lathe and machining center

Key Component : Articulated robots, tray system, fixture and gripper, measurement, visual positioning system, laser engraving, cloud

Advantages :

- Customized grippers/fixtures and tray system to meet different types of automation requirements
- Equipped with PAIR application package for connecting robot and CNC through network means and greatly reduce I/O cabling and integration time
- Support synchronous movement for external axis such as linear rails or multi-axis positioners
- Connect to a cloud solution for an intelligent factory. It provides status monitoring, remote tool compensation and diagnostic features



Tool Grinder Pick and Place

Solution

Goal : Solution to pick & place of tool grinder

Key Component: Articulated robots, customized tray system, fixture and gripper, measurement, visual positioning system, laser engraving

Advantages:

- Customized grippers/fixtures and tray systems to meet different types of automation requirements.
- High speed and high precision with $\pm 0.02\text{mm}$ position repeatability

Suitable for high precise applications, such as pick & place of tool grinder and 3C industry

- Equipped with IP54. Optional feature is IP67. Support applications in the toughest environments
- Intuitive icon-based programming on a teach pendant, which shortens engineer learning curve



ROBOT APPLICATIONS

Welding & Laser Industry

Solution

Goal : Arc welding, laser welding, laser cutting

Keywords : Articulated robots, welding fixtures, welding torch, linear rail and welding positioner

Advantages :

- Satisfy various applications of welding such as weaving welding, spot welding, stitch welding, laser vision seam tracking and multiple work stations
- Support up to 10 external axis move simultaneously. It's easy to add linear rail and positioner
- Provide Mastering Tool Calibration feature to increase trajectory precision effectively
- Support various welding machine brands such as Migatron, OTC, Lincoln and Fronius



Woodworking & Glass Industry

Solution

Goal : Glass handling and board handling

Keywords : Articulated robots, linear rail, suction cup, tray system, cloud

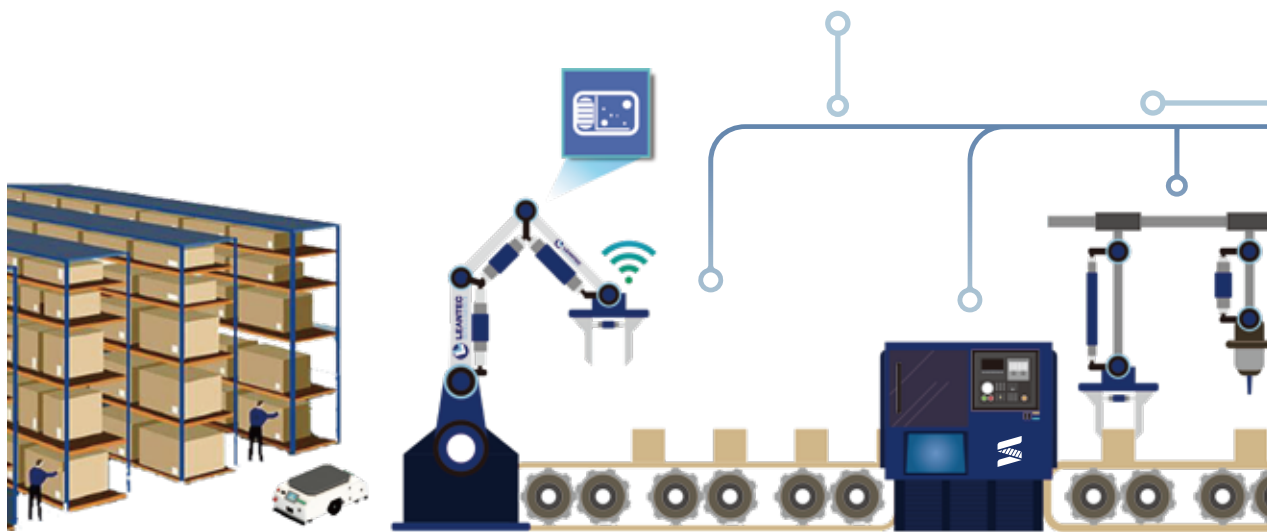
Advantages :

- Supports lots of customized user/tool coordinates, multi-functional suction cup gripper, automatic matching size & direction of workpieces for different applications
- Equipped with PAIR application package for connecting robot and wood cutting, auto-labeling and edge bander machine through network means and greatly reduce I/O cabling and integration time
- Intuitive icon-based programming on a teach pendant



INTELLIGENT FACTORY

Solution

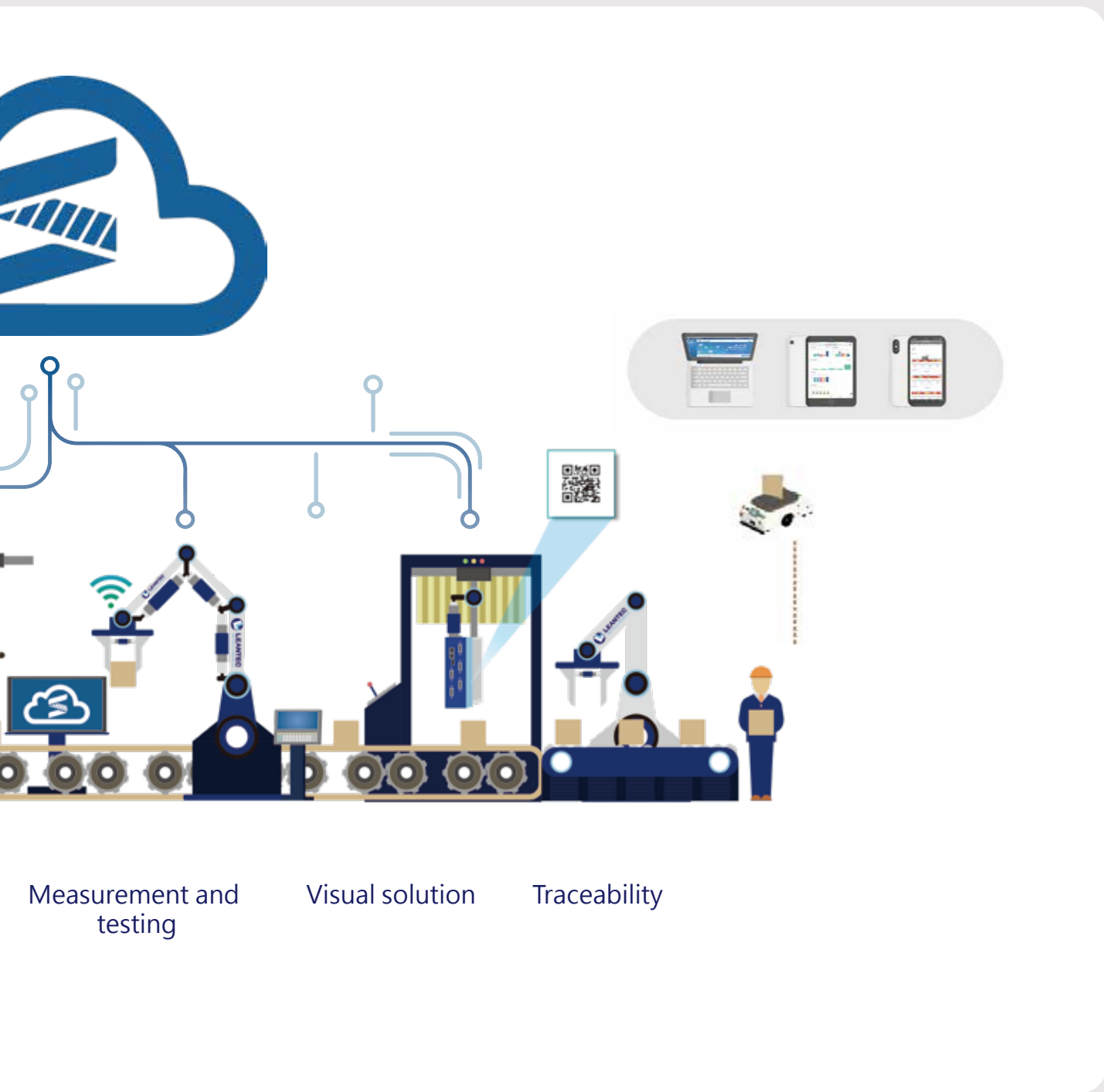


Warehousing

Pick and place
solution

Crafting





ROBOT CONTROLLER



81R

Integrated design of controller and teach pendant
Support touch panel & safety switches



FCIO

Modular design can be extended/disassembled efficiently
Up to 256 I/O which can meet the requirements of automation

DEVELOPMENT TOOL

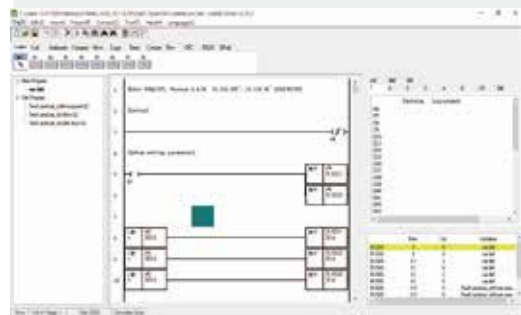
eHMI editor

Easy-to-use HMI customization tool



PLC editor

Standard SYNTEC PLC ladder programming to quickly connect to I/O devices



SYSTEM FUNCTIONS

Program Edit

Icon-based programming interface and various application packages to reduce the need to master a new robot language



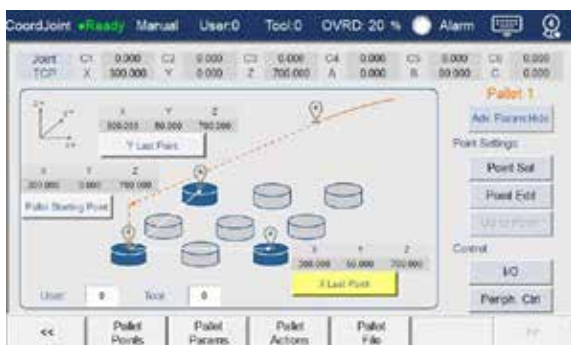
Reference Points

Record reference points to use repeatedly during robot programming



Tray

Simple tray setting process with an unique application package to implement automation quickly



Mastering Tool Calibration

Advanced calibration method of mastering position and tool center point for better robot accuracy

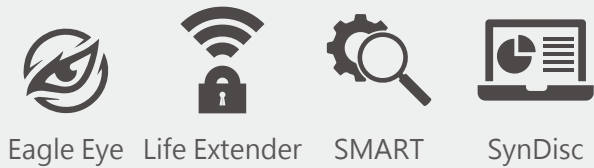


LEANTEC CLOUD PRODUCT

Smart Service Cloud

Customer: Machinery factory

- Realize remote diagnosis and tracking by LEANTEC cloud product
- Reduce the need for on-site servicing
- Monitor real-time status control
- Improve efficiency of handling solution



Smart Production Cloud

Customer: Production line

Flexible design and highly customized HMI and visualizing data, showing the real-time status of equipment and making factory management easier



SynFactory BI



Utility dashboard



Customization data monitor



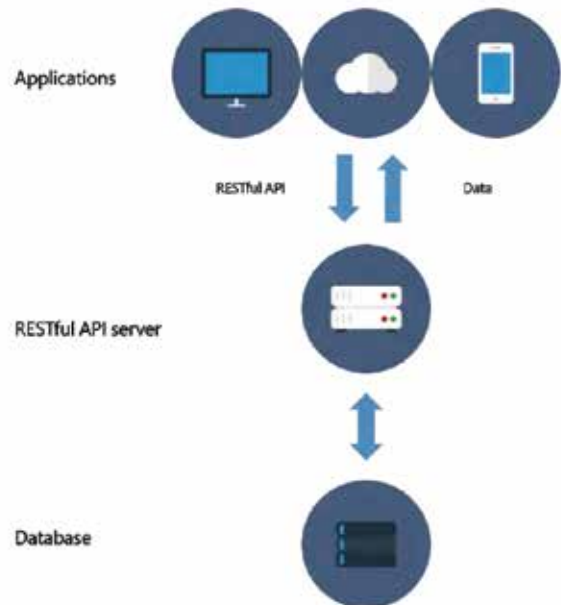
Production cloud system



Real-time monitor dashboard



Smart phone APP



MECHATRONIC SOLUTION TRACEABILITY SYSTEM

Feature

- Comparing to traditional marking lasers, integrated design can build up manufacturing process into product traceability rapidly
- PC-based controller can work independently and reliably with small temperature drift, high precise and digitizing temperature
- Equipped with off-axis camera, integrate marking lasers and virtual monitor into the same controller



VISUAL SOLUTION

Feature

- Support displaying and setting visual parameters on screen in SYNTEC controller
- Controls directly through R register and SYNTEC Macro
- Support Integration of Cognex and Hikvision visual solutions
- Monitor data on the controller screen with IP CAM



MEASURING & TESTING SOLUTION

Feature

- Support multi-axis synchronous motion for larger measuring range
- Easy setup for common industrial communications (MODBUS-TCP, RS485, RS232)
- Simple integration with other vision systems
- Generate measurement log for long-term monitoring
- Upload real-time data through the Internet for tool compensation and remote monitoring



